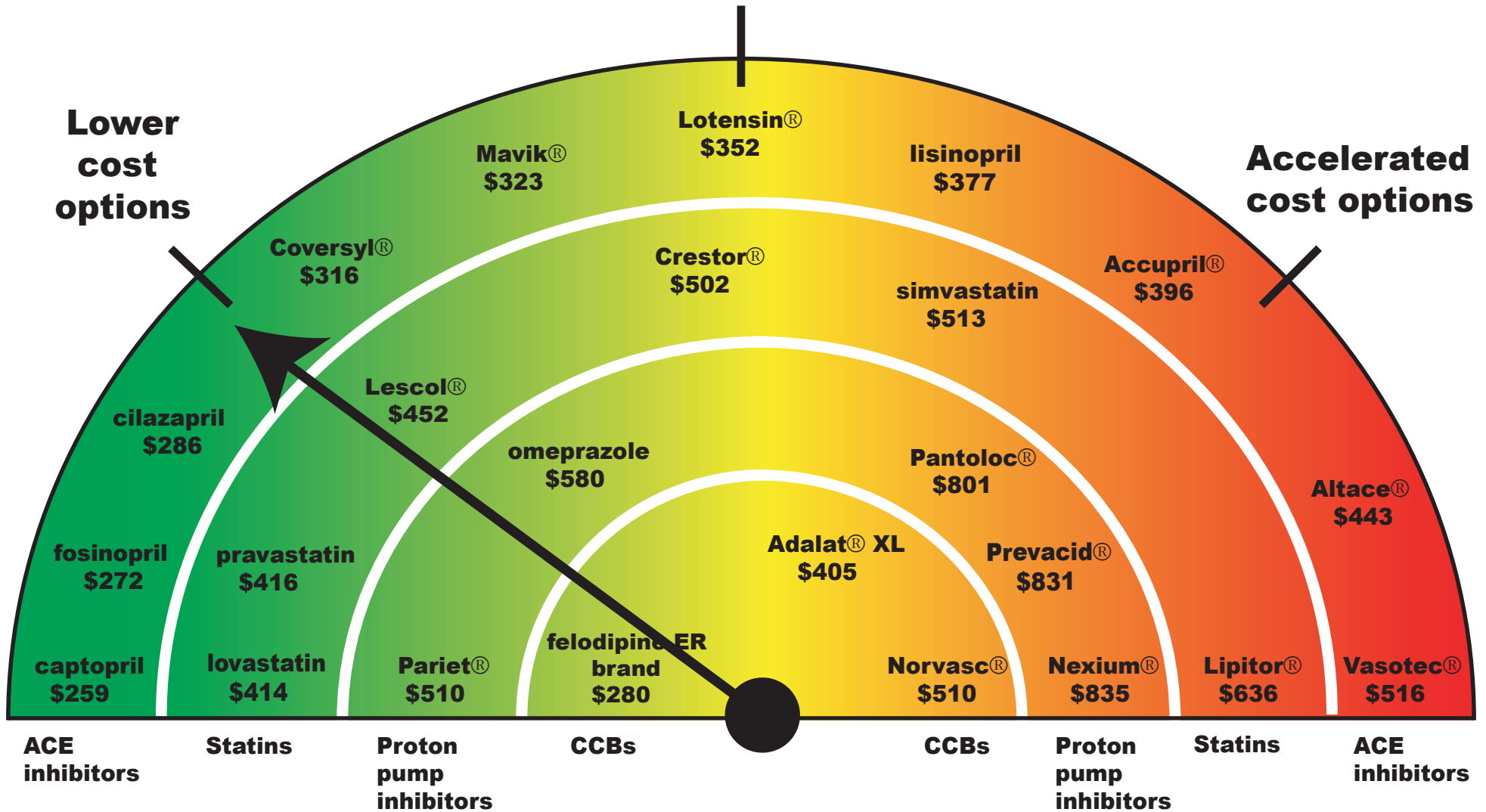
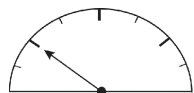


Price Speedometer



Average Yearly Treatment Costs*

Please turn over for information on how average yearly cost was calculated.



© 2006, *The Chart Insert Pilot Study*. Principal Investigator: Dr. M. Maclure.
 For more information, please contact us by phone toll-free at (877) 472-5132, fax
 toll-free at (866) 406-0303, or visit us at www.BCChIPs.ca



Name	Dose	PharmaCare average cost per day		Name	Dose	PharmaCare average cost per day		Name	Dose	PharmaCare average cost per day	
Statins				ACE Inhibitors				Calcium Channel Blockers (CCBs)			
atorvastatin Lipitor® brand Generic				captopril Capoten® brand Generic				felodipine ER Brand** Generic			
	10 mg	\$1.74	Not available		6.25 mg	Not available	\$0.23		2.5 mg	\$0.58	Not available
	20 mg	\$2.13	Not available		12.5 mg	\$0.34	\$0.42		5 mg	\$0.76	Not available
	40 mg	\$2.21	Not available		25 mg	\$0.63	\$0.71		10 mg	\$1.09	Not available
	80 mg	\$1.91	Not available		50 mg	\$1.33	\$1.42	amlodipine Norvasc® brand Generic			
simvastatin Zocor® brand Generic				lisinopril Brand** Generic				5 mg \$1.39 Not available			
	5 mg	\$0.84	\$0.56		10 mg	\$0.66	\$0.57	10 mg \$2.03 Not available			
	10 mg	\$1.82	\$1.14		20 mg	\$0.85	\$0.74	nifedipine Adalat XL Generic			
	20 mg	\$2.19	\$1.40		20 mg	\$1.16	\$1.03		30 mg	\$1.11	Not available
	40 mg	\$1.99	\$1.37	fosinopril Monopril® brand Generic					60 mg	\$1.29	\$0.90
	80 mg	\$1.46	\$0.92		10 mg	\$0.86	\$0.54	<p>*The annual cost calculations are based on the PharmaCare average cost/tablet for the period January 1, 2005 – December 31, 2005. When more than one dosage was available for a drug, the cost of the most frequently prescribed tablet dosage for each drug was used. The generic cost was used to calculate annual savings when available.</p> <p>**Where there are more than one brand product an average has been used.</p>			
rosuvastatin Crestor® brand Generic					20 mg	\$1.09	\$0.74				
5 mg \$1.32 Not available				perindopril Coversyl® brand Generic							
10 mg \$1.37 Not available					2 mg	\$0.65	Not available				
20 mg \$1.69 Not available					4 mg	\$0.86	Not available				
40 mg \$1.73 Not available					8 mg	\$1.11	Not available				
pravastatin Pravachol® brand Generic				benazepril Lotensin® brand Generic							
	10 mg	\$1.30	\$0.98		5 mg	\$0.45	Not available				
	20 mg	\$1.52	\$1.14		10 mg	\$0.73	Not available				
	40 mg	\$1.75	\$1.36		20 mg	\$0.96	Not available				
lovastatin Mevacor® brand Generic				trandolapril Mavik® brand Generic							
	20 mg	\$1.89	\$1.13		1 mg	\$0.71	Not available				
	40 mg	\$3.06	\$2.11		2 mg	\$0.88	Not available				
fluvastatin Lescol® brand Generic					4 mg	\$1.03	Not available				
	20 mg	\$0.84	Not available	quinapril Accupril® brand Generic							
	40 mg	\$1.24	Not available		5 mg	\$0.98	Not available				
	80 mg	\$1.18	Not available		10 mg	\$1.05	Not available				
Proton Pump Inhibitors					20 mg	\$1.08	Not available				
rabeprazole Pariet® brand Generic					40 mg	\$0.94	Not available				
	10 mg	\$1.40	Not available	cilazapril Inhibace® brand Generic							
	20 mg	\$2.16	Not available		1 mg	\$0.89	\$0.50				
pantoprazole Pantoloc® brand Generic					2.5 mg	\$0.78	\$0.52				
	20 mg	\$1.94	Not available		5 mg	\$1.15	\$0.78				
	40 mg	\$2.19	Not available	ramipril Altace® brand Generic							
lansoprazole Prevacid® brand Generic					1.25 mg	\$0.74	Not available				
	15 mg	\$2.23	Not available		2.5 mg	\$0.87	Not available				
	30 mg	\$2.27	Not available		5 mg	\$0.89	Not available				
esomeprazole Nexium® brand Generic					10 mg	\$1.21	Not available				
	20 mg	\$2.39	Not available	enalapril Vasotec® brand Generic							
	40 mg	\$2.28	Not available		2.5 mg	\$0.83	Not available				
omeprazole Losec® brand Generic					10 mg	\$1.41	Not available				
	10 mg	\$2.29	Not available		20 mg	\$1.68	Not available				
	20 mg	\$2.89	\$1.59								